

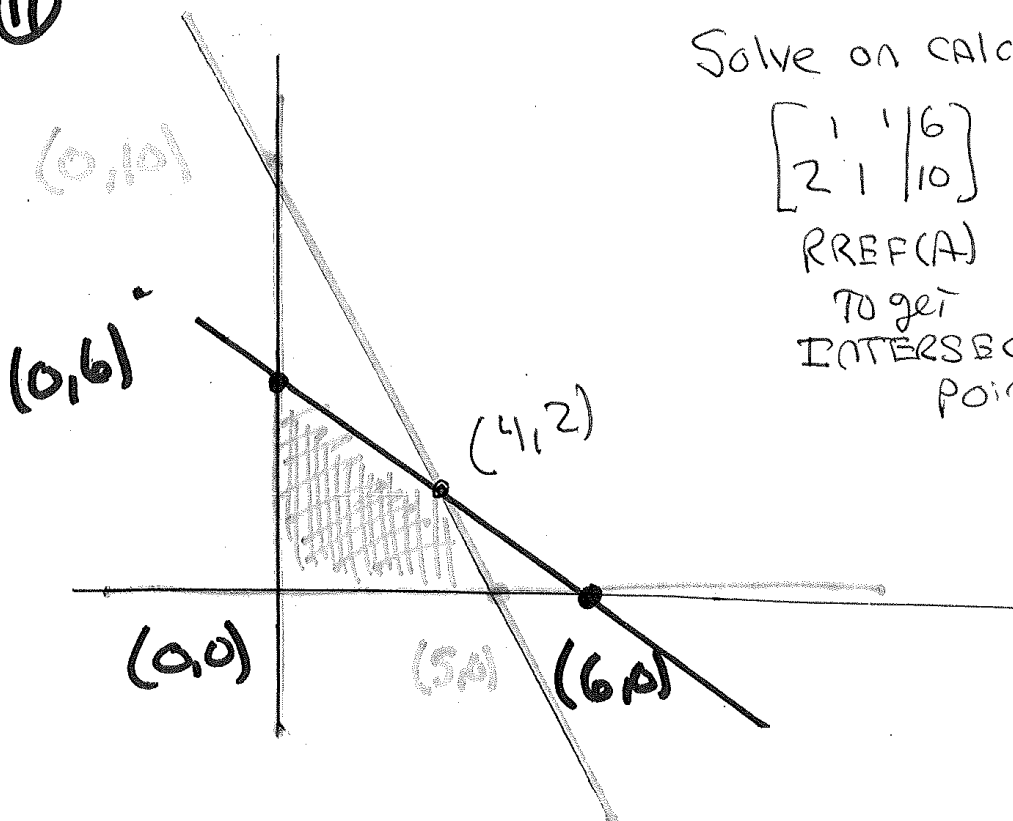
Practice test Answers:

1) (3,4) 2) (3,2) 3) (4,1,-1) 4) (2,5) 5) $\begin{bmatrix} 5 & 4 & 1 \\ 1 & -4 & 2 \end{bmatrix}$

6) $\begin{bmatrix} 1 & 0 & -1 \\ 17 & 4 & 5 \\ 13 & 0 & 2 \end{bmatrix}$ 7) deleted 8) $D = 13$ $D_x = 26$ $D_y = 13$ $x = 2$ $y = 1$

9) (2,3) (3,2) 10) (-2,6) (3,1)

11



Solve on CALCULATOR

$$\left[\begin{array}{cc|c} 1 & 1 & 6 \\ 2 & 1 & 10 \end{array} \right]$$

RREF(A)

TO get
INTERSECTION
POINT

CORNER POINTS IN
REGION WHERE SHADING
OVERLAPS

(0,0)

(5,0)

(4,2)

(0,6)