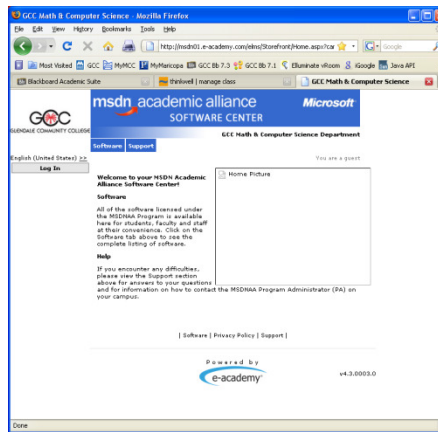


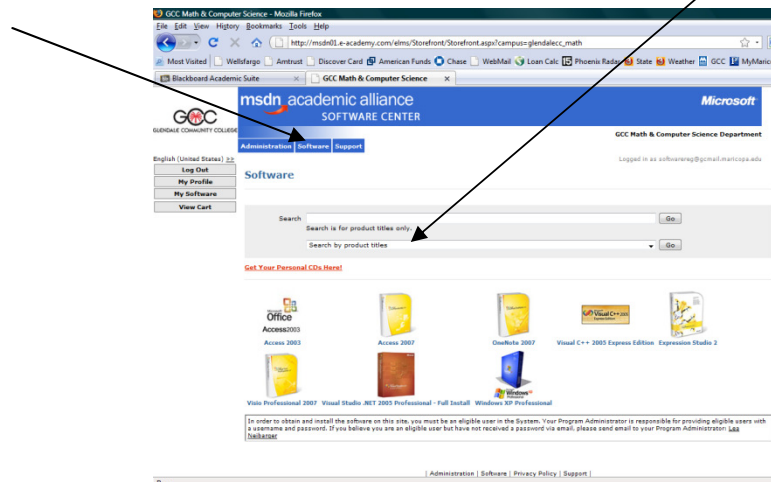
# Microsoft Academic Alliance Software

The GCC Math and Computer Science Dept. has obtained a licensing agreement with Microsoft that allows our students access to FREE fully configured software packages. To select and install the products you want, follow these instructions. Online support is also available through the website.

**Step 1:** Login to the GCC Math and Computer Science Download Center. ([http://msdn01.e-academy.com/glendalecc\\_math](http://msdn01.e-academy.com/glendalecc_math)) . If your instructor has requested registration for you, you would have received an email with the subject “Welcome to MSDN Academic Alliance: Online Software System”. This email contains your username and a randomly generated password along with the link to the website. Once you login, you may change your password.



**Step 2:** Select your software. Go to the Software Store Front by clicking on the Software Tab located under the MSDN Academic Alliance banner at the top of the page. Click on one of the software boxes or select the software from the combo box “Search by Product Titles”. Go through the Checkout process. You will see a Download link next to your selected software.



**Step 3:** Download the setup file. This is a quick download that initiates the download of the software image file (.iso). Notice the estimated download time.

**Step 4:** Along with the download, you will receive a free copy of Roxio. This is a media creator program that will allow you to unpack the downloaded image file (.iso). You can unpack the image file to a folder on your computer or burn it onto a CD. Start Roxio and select the Copy operation. Select the option to “Burn an Image” to create a CD or “Copy an Image” to unpack the .iso file to a folder on your computer.

**Note:** Do not perform a straight file copy of the .iso file to a CD or folder. The installation will not work.

If a CD was created, insert it into your CD/DVD drive and the installation will automatically begin. If the image file was unpacked to a folder, run the Setup.exe file.

If you have trouble downloading or installing the software, please contact **Technical Support** by clicking the Support tab located under the MSDN Academic Alliance banner.

